

AG 275/275L: Forest Pest Mgmt & Lab

Spring 2011



9am – 2:45pm Mondays Bldg 3393, Room 104 (Manono Campus)

Instructor: Pamela Scheffler

email: pamelays@hawaii.edu

Office phone: 933-0835

Office Hours: Wednesday: 2-2:50pm, Friday: 1-2:50pm ,

Or by appointment (3393-124)

Texts: Ware. 2005. *Complete Guide to Pest Control with and without Chemicals*

Motooka. 2004. *Weeds of Hawaii's Pastures and Natural Areas*

Pratt. 2003. *A Pocket Guide to Hawaii's Trees and Shrubs*

Stone et al. 1992. *Alien Plant Invasions in Native Ecosystems of Hawaii: Management and Research*
(online at: http://www.botany.hawaii.edu/faculty/duffy/book/1992_chap/)

"I am not a pest," Ramona Quimbly told her big sister Beezus.
"Then stop acting like a pest," said Beezus.... "I'm not acting like
a pest. I'm singing and skipping," said Ramona, who had only
recently learned to skip with both feet. Ramona did not think she
was a pest. No matter what the others said, Ramona never thought
she was a pest – Beverly Cleary (*Ramona the Pest*)

Objectives: To learn to identify pests and other threats to native forest ecosystems and forestry and agroforestry operations, and to learn techniques and methods of non-chemical and chemical control

Note: The lecture and laboratory sections must be taken concurrently.

Grade will be based on the following:

Tests (midterm and final)	20 pts
Quizzes/assignments:	10 pts
Participation/attendance	20 pts
Pest collection	20 pts
Weekly lab summaries	20 pts
Group Project	10 pts
<hr/> Total	<hr/> 100 pts

Learning environment: I expect each of you to contribute positively to the learning experience, both your own and that of your classmates. As such, I will expect you to have completed all reading assignments by the day indicated on this syllabus and be prepared to ask questions and/or discuss the material in class. I expect honesty and integrity in all your work and interactions with other students*. If you need any special assistance, please ask**. Attendance is mandatory and counts towards your grade, but you may substitute 1 missed class with participation in a Service Learning*** project along with a written trip report from the project.

Materials needed: Please come to each class with material for writing (i.e., pen(cil) and paper) and appropriate clothing. On field trips you need to be prepared to be outside, regardless of the weather: please bring comfortable and sturdy shoes, work gloves, a water bottle, and be prepared for rain and sun. On days when we are handling pesticides, long sleeves and pants and closed-toed shoes are required.

Trip Reports:

Trip reports are due one week after each fieldtrip. They should include the objectives of the trip, a description of where we went, who (in anyone) we met with, what we did, and what you learned. Late reports will be docked 1 grade per week late. After 3 weeks they will receive an automatic F.

Group Project:

The group project will be discussed in class. A report from the project will be due at the end of the semester.

Pest Collection:

You will maintain a collection of forest pests. These can be plant, invertebrate, or vertebrate. Plants and invertebrates must be properly preserved and labeled, vertebrates may be presented as collections of your original photographs with a description of the ecology of the species. A passing collection will contain a minimum of 30 unique specimens. Plants and vertebrates need to be indentified to species; invertebrates must be identified to Order and classified by morpho-species.

Passing Grades:

90-100%	A	70-79.99%	C
80-89.99%	B	60-69.99%	D

Counselors are available: please call 974-7741 if you would like to speak with a counselor about any issues which have a negative impact on you ability to successfully complete this, or any other, class.

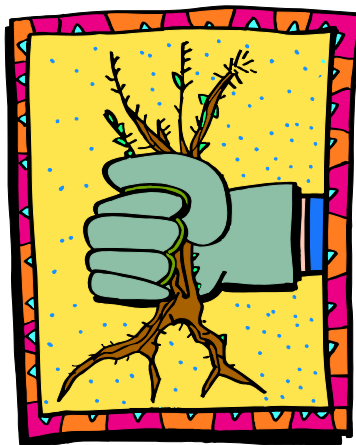
***Compliance with HawCC Student Conduct Code:**

Every student is expected to comply with the student conduct code: "Impermissible behavior includes... interference in the rights of others, interference with university processes, theft of mutilation of college property, disruption, abuse of controlled substances, off-campus behavior, academic dishonesty which includes cheating and plagiarism."

****Individual Accommodation**

H.C.C. is committed to provide equal access to the campus, classes, and programs for students who have disabilities. If you have a documented disability and/or related access needs, please see your instructor during office hours or contact Karen Kane of the Ha`awi Kokua Program (933-0702) as early as possible. If you are a student who needs to have an accommodation, please discuss your needs and make your request in a timely manner.

***<http://www.hawcc.hawaii.edu/laurab/servicelearning/default.htm>



Highly Tentative Class & Lab Schedule (AG 275 Spring 2011)

Day	Class	Reading	Lab
January 10	Introduction/What is a Pest?		Film
January 17	MARTIN LUTHER KING HOLIDAY		
January 24	Insect taxonomy	W: Ch 1&2, 67-83	Field ID
January 31	Tropical Forests	handout	project intro
February 7	Nursery Pests		Greenhouse
February 14	Pesticides	W: Ch 3	Forest pests - Pat Conant
February 21	PRESIDENTS' DAY HOLIDAY		
February 28	Biocontrol	S: 452-465	Tracy Johnson USDA Forest Service
March 7	Insect pests		Robby Hollingsworth
March 14	MIDTERM		
March 21	SPRING BREAK HOLIDAY		
March 28	Reading pesticide labels	W: Ch 7, 8, & 9	Tractor Spraying
April 4	Weed control	M: 5-19, S: 485-505	NPS - <i>Myrica faya</i> control
April 11	biodiversity	handout	project
April 18	Alternatives to Chemical Control	W: Ch 4	HAVO - outplanting
April 25	Invasive vertebrates	W: Ch 6	Monitoring pig activity
May 2	Pests and Climate Change	handout	chainsaw maintenance
FINAL EXAM			

Reading Key:

W = Ware

M = Mookota

S = Stone et al.