

*Connecting to the*

# **Hawai'i Community College Wireless Network**

*Manono Campus  
University of Hawai'i Center West Hawai'i Campus  
Upper Campus (University of Hawai'i at Hilo)*



UNIVERSITY of HAWAII®  
**HAWAII**  
COMMUNITY COLLEGE

---

Requirements .....	1
Campus Wireless Coverage .....	1
Wireless Connection Configuration.....	2
Authentication.....	7

## Requirements

Laptop with wireless capability (802.11a, 802.11b/g)

Anti-virus software

UH faculty, staff, or students may download a copy of anti-virus software at no charge.

<http://www.hawaii.edu/antivirus/stepone.html>

Internet Browser: Internet Explorer, Firefox

Valid UH Username/Password

## Campus Wireless Coverage

### 1. Manono Campus

Building 378 – Administration

Building 379 – Counseling, Student Life Center

Building 379A – Conference Rooms

Building 380 – Title III, AEC Classrooms

Building 381 – IEP Classrooms, DMA Classroom, Hawaii Life Styles Classroom

Building 382 – Cafeteria Main Dining Room

Building 385A – OCET Apprenticeship Classroom

Building 386 – Classroom

Building 387 – Hale Kea

Building 388 – Classrooms

Building 392 – ATE Conference Room

Building 3386B – Carpentry Classroom

Building 397 – Business Office

Building 3393 – Agriculture, Forest Team, Early Childhood Classrooms

Building MPA - Classrooms

### 2. University of Hawai'i Center West Hawai'i Campus

Building 1 – Faculty Offices, Biology Lab, Title III, VidCon Room

Building 2 – Library/Learning Center, Classrooms, Nursing Classroom, 2<sup>nd</sup> Floor Office

Building 3 – Administrative Offices, Faculty Offices, Conference Room,  
Student Services, Computer Lab

Building 4 – HITS Rooms, Food Service

Building 5 – Educational Talent Search

### 3. Upper Campus (University of Hawai'i at Hilo)

Building 346 – Business Education Conference Room

Building PB5 – Nursing Classrooms

Building PB7 – Nursing Classrooms

Wireless capability is also available on the University of Hawai'i at Hilo Wireless Network. Refer to

[http://www.uhh.hawaii.edu/uhh/otdl/uhh\\_wireless\\_network.pdf](http://www.uhh.hawaii.edu/uhh/otdl/uhh_wireless_network.pdf) for instructions.

## Wireless Connection Configuration

Verify that the wireless switch (if applicable) is ON, and Wireless Network Connection is enabled on your laptop.

### 1. Windows XP

- a. You can find the Wireless Network Connection in Control Panel > Network Connections or by right-clicking on My Network Places.

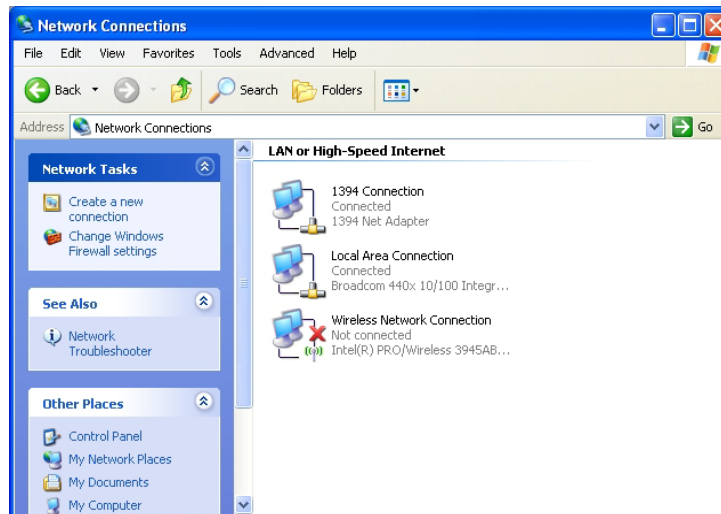


Figure 1 Windows XP Network Connection

- b. Right-click on the “Wireless Network Connection” icon and select “Properties” from the menu.

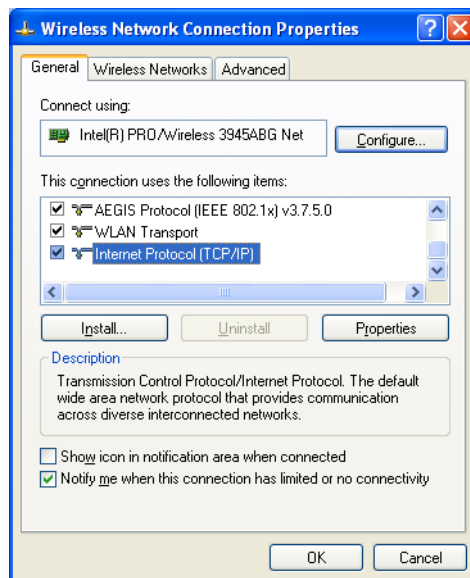


Figure 2.1 Windows XP Network Connection Properties

- c. Highlight “Internet Protocol (TCP/IP) and hit [Properties]. Select “Obtain an IP address automatically” and “Obtain DNS server address automatically.”

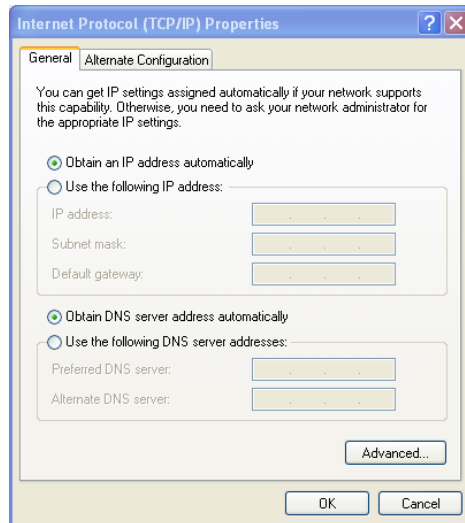


Figure 3.2 Windows XP Internet Protocol Properties

- d. Using your laptop Wireless Network Connection utility, select “hawcc” from the list of wireless networks.

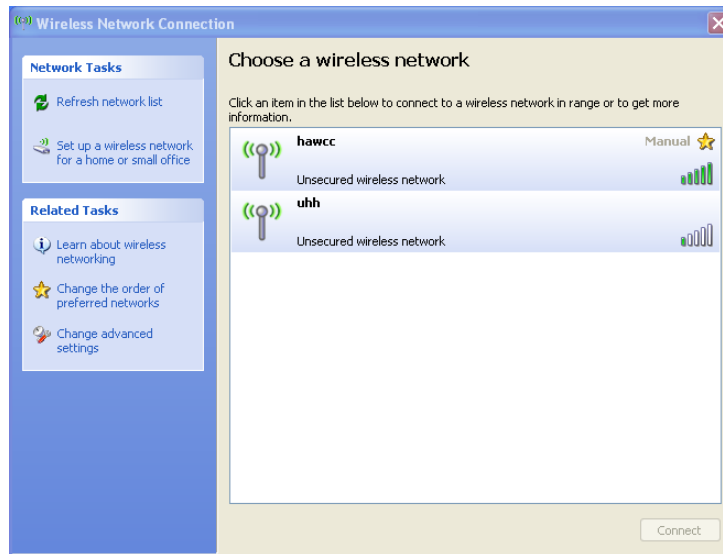


Figure 4.3 Windows XP Network Connections

- e. The laptop will attempt to connect to the “hawcc” wireless network. When connected, a message may be displayed.

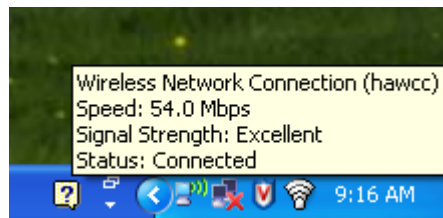


Figure 5.4 Windows XP Connected Message

## 2. Windows Vista

- a. You can find the Wireless Network Connections in Network>Network and Sharing Center>Manage Network Connections.

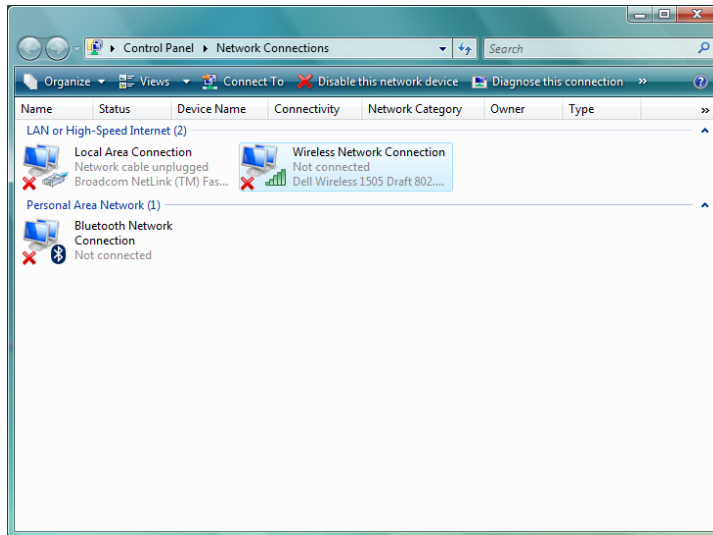


Figure 2 Windows Vista Network Connection

- b. Right-click on the "Wireless Network Connection" icon and select "Properties" from the menu.

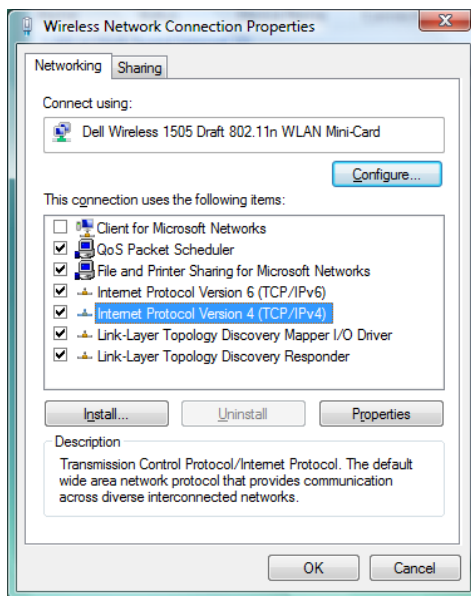


Figure 2.1 Windows Vista Network Connection Properties

- c. Highlight “Internet Protocol Version 4 (TCP/IPv4) and hit [Properties]. Select “Obtain an IP address automatically” and “Obtain DNS server address automatically.”

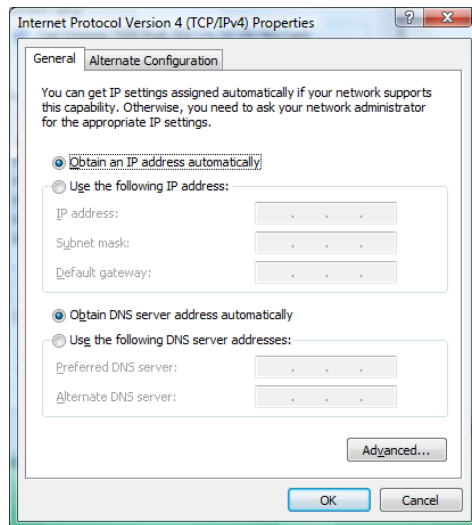


Figure 2.2 Windows Vista Internet Protocol Properties

- d. Using your laptop Wireless Network Connection utility, select “hawcc” from the list of wireless networks.

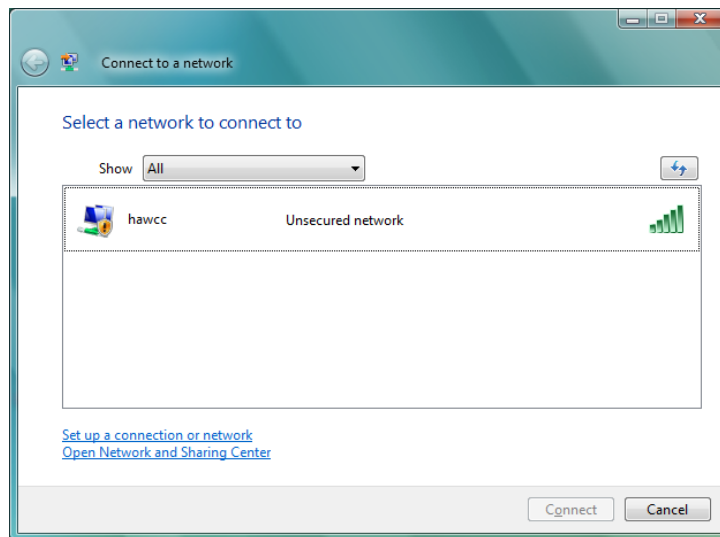


Figure 2.3 Windows XP Network Connections

- e. The laptop will attempt to connect to the “hawcc” wireless network. When connected, a message may be displayed.

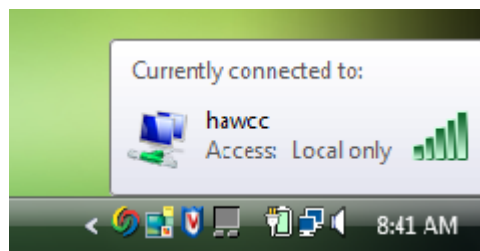


Figure 2.4 Windows XP Connected Message

### 3. Mac OS X

- a. Turn the Airport connection on. You may access the Airport connection through System Preferences > Network or the icon on the system tray.

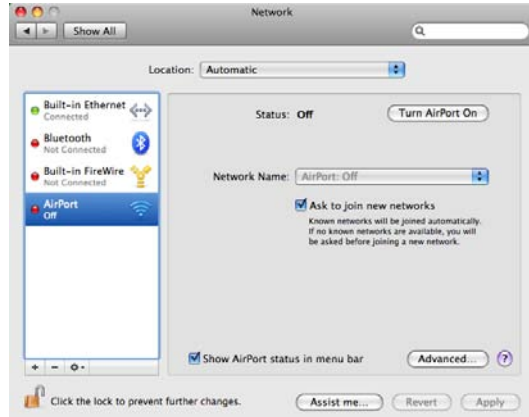


Figure 3.1 Mac OS X System Preferences Network Airport Settings

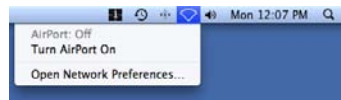


Figure 3.2 Mac OS X System Tray Airport

- b. Select “hawcc” from the list of wireless networks.



Figure 3.3 Mac OS X System Tray Wireless Networks Menu

- c. The laptop will attempt to connect to the “hawcc” wireless network. When connected, the airport icon will show the signal strength of the wireless connection.



## Authentication

After a wireless connection is made, open up your internet browser. An authentication window will be displayed. Type in your UH username and password. After your UH username and password is authenticated, you will be able to access the internet.



Figure 4 Manono Campus Authentication Window



Figure 4.1 University of Hawai'i at Hilo Campus Authentication Window



Figure 4.2 University of Hawai'i Center West Hawai'i Campus Authentication Window